

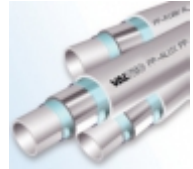
ĐŠĐ<sup>3/4</sup>Đ<sup>1/4</sup>Đ<sub>¿</sub>Đ°Đ<sup>1/2</sup>Đ, Ñ• Đ<sub>¡</sub>Đ<sub>μ</sub>Ñ€Đ<sup>2</sup>Đ, Ñ•Ñ†Đ<sub>μ</sub>Đ<sup>1/2</sup>Ñ, Ñ€Đ<sup>3/4</sup>Đ

tmp



**ĐçÑ€ÑƒĐ±Đ° PP-ALUX VALTEC,  
Đ°Ñ€Đ<sup>1/4</sup>Đ, Ñ€Đ<sup>3/4</sup>Đ<sup>2</sup>Đ°Đ<sup>1/2</sup>Đ<sup>1/2</sup>Đ°Ñ•  
Đ°Đ»ÑŽĐ<sup>1/4</sup>Đ, Đ<sup>1/2</sup>Đ, Đ<sub>μ</sub>Đ<sup>1/4</sup>, PN25**

[ĐŸĐ<sup>3/4</sup>Đ·Đ<sup>2</sup>Đ<sup>3/4</sup>Đ<sup>1/2</sup>Đ, Ñ, Đ<sub>μ</sub>, Ñ†Ñ, Đ<sup>3/4</sup>Đ±Ñ€  
ÑƒÑ, Đ<sup>3/4</sup>Ñ†Đ<sup>1/2</sup>Đ, Ñ, Ñ€Ñ†Đ<sub>μ</sub>Đ<sup>1/2</sup>Ñƒ](#)



Đ•Ñ€Ñ, Đ, Đ°ÑƒĐ» (Đ±Đ <sub>μ</sub> Đ»Ñ€Đ <sup>1</sup> )	Đ Đ°Đ·Đ <sup>1/4</sup> Đ <sub>μ</sub> Ñ€Â	Đ'Đ <sub>μ</sub> Ñ•, Đ <sup>3/4</sup> Đ <sup>1/4</sup> Â	Đ£Đ¿Đ°Đ°Đ <sup>3/4</sup> Đ <sup>2</sup> Đ°Đ°, Đ <sup>1/4</sup>
VTp.700.AL25.25	25Ñ...4,2	262	80
VTp.700.AL25.32	32Ñ...5,4	446	60
VTp.700.AL25.40	40Ñ...6,7	880	40
VTp.700.AL25.50	50Ñ...8,3	1150	24

[Đ<sup>1/2</sup>Ñ, Đ<sup>3/4</sup>Ñ€Đ<sup>1/4</sup>Đ°Ñ†Đ, Ñ• Đ<sup>3/4</sup> Đ¿Ñ€Đ<sup>3/4</sup>Đ'Đ°Đ<sup>2</sup>Ñ†Đ<sub>μ</sub>](#)